



WHAT'S ON  
March – May 2024

Petersfield  
MUSEUM  25  
and ART GALLERY



Join us as we celebrate our 25th Anniversary year at Petersfield Museum and Art Gallery! To celebrate our birthday, we are delighted to announce that under-18s go free for general admission, made possible by the generous support from the Tansy Trust. We are excited to bring you a programme full of exhibitions and events for everyone to enjoy—from dynamic art exhibitions to live music evenings and family creative workshops—we invite everyone to participate in our 2024 celebrations.

Discover our range of exhibitions and events in this What's On guide, explore our [What's On page](#) of our website to see our full range of events, and keep up to date with the latest information by joining our emailing list. All information is correct at the time of publication, but events are subject to change. Please note that outdoor events take place regardless of the weather (unless considered dangerous).

## ABOUT US

Petersfield Museum and Art Gallery is an accredited, independent museum and registered charity. Established in 1999, it underwent a £4 million redevelopment, supported by the National Lottery Heritage Fund.

A rare example of a restored Victorian Justice Heritage site, our permanent collections include an Archaeology Collection and Social History Collection relating to Petersfield and the surrounding area, the Flora Twort Art Collection, a Photography Collection (including the Don Eades Photographic Archive) and a Fashion and Textiles Collection (including the Bedales Historic Dress Collection), as well as a Reference Archive. The Flora Twort Gallery is a dedicated art gallery with an ambitious fine art and contemporary craft exhibition programme and an inclusive public programme. We are also home to the Tim Wilton-Steer Collection of works by and about the poet Edward Thomas, housed in The Edward Thomas Study Centre.

Discover more  
[www.petersfieldmuseum.co.uk](http://www.petersfieldmuseum.co.uk)  
Facebook [Petersfieldmuseum](#)  
Instagram [@petersfieldmuseum](#)  
X [@PfieldMuseum](#)

## THE COFFEE SHOP

*Great coffee shop. Highly recommend stopping by and getting a latte!*

*(Coffee Shop Visitor)*

**Open to the public Tuesday to Saturday | 9.30am-4.00pm | Seasonal menus**

What's a trip to the museum and art gallery without a morning latte or afternoon pot of tea to enjoy, alongside a delicious slice of cake? Discover our Coffee Shop located just off our courtyard – an intimate venue where coffee meets culture!



Our Coffee Shop hosts a range of coffee and teas year-round with a selection of sweet and savoury treats. Try a classic or seasonal coffee, freshly brewed by our friends at the local roastery Moon Roast Coffee. For something a little lighter, we have a range of Bird & Blend teas. [Follow the Coffee Shop Instagram](#) to keep up to date with our seasonal selection of drinks and treats.

Find the Coffee Shop by walking through the green gate on the left side of the Museum and Art Gallery. We welcome everyone with a selection of kid-friendly snacks, toys and books, with the Courtyard available for your little ones to run around safely. Dogs are also welcome in the Courtyard and Coffee Shop.



## THE SHOP

**Open to the public Tuesday to Saturday | 10.00am-5.00pm**

Find your one-stop shop for gifts in Petersfield at our Shop, located at the front of our Museum and Art Gallery. We host a range of products, taking inspiration from our latest exhibitions, special collections, local history and the beautiful South Downs landscape.

We proudly offer an ever-changing range of locally sourced gifts, high-quality stationery, seasonal cards, unusual books, educational toys, and much more! Follow our [Facebook](#) or [Instagram](#) to keep up to date with our latest seasonal products and offerings.



## THE EDWARD THOMAS STUDY CENTRE

**Open to the public Wednesday and Thursday 10.00am-3.30pm, or by appointment at other times**

The Edward Thomas Study Centre is the home of a collection of books, art, artefacts and other items reflecting the life and continuing influence of poet, writer and literary critic Edward Thomas.

Attracted by the landscape and the South Downs, Thomas and his family lived in Steep, near Petersfield for ten years, from 1906 to 1916. Discover the life and times of Edward Thomas and see our library of poetry and prose holding works by and about the writer.



Picture by Gill Shaw

## EXHIBITIONS

Entry to all exhibitions is included in the admission price and is available to [pre-book online](#) or at our Welcome Desk located in the Shop. Concession tickets are available.

### **Katharine Swailes and Caron Penney** **The Language of Weaving** Flora Twort Gallery 5 March – 1 June 2024

Katharine Swailes and Caron Penney are internationally renowned artists creating wall based artworks using the ancient technique of handwoven tapestry. Both Swailes and Penney are inspired by their time living and working in the Arun Valley, where they developed their unique approaches to the traditional skills of tapestry weaving.

*"As weavers, we are time travellers, following a path that has been trodden for millennia in the same way but ever different."*

Swailes and Penney



Katharine Swailes, *Spring Field* ©The Artist



©Steve Speller

### **Demonstration by Katharine Swailes**

Flora Twort Gallery  
9 April 2024 | 11.00am-3.00pm  
Included in admission price

See first-hand the intricate art of tapestry weaving with Katharine Swailes demonstrating this ancient technique in the Flora Twort Gallery.

Book admission tickets: [www.petersfieldmuseum.co.uk](http://www.petersfieldmuseum.co.uk)



## EXHIBITIONS

# PEGGY GUGGENHEIM PETERSFIELD TO PALAZZO 15 JUNE - 5 OCTOBER 2024

Delve into the extraordinary life of Peggy Guggenheim, the 20th-century self-proclaimed 'art addict' who called Yew Tree Cottage near Petersfield home from 1934 to 1939.

Featuring a focused selection of artworks by artists who the self-described 'art addict', knew and supported, *Peggy Guggenheim: Petersfield to Palazzo* will show paintings, prints and sculptures by leading British and European modern artists including Jean Arp (1886-1966), Max Ernst (1891-1976), Henry Moore (1898-1986), Rita Kernn-Larsen (1904-1998) and Yves Tanguy (1900-1955), amongst others. A variety of photographs, contemporary fashion items and literature will give further context to the fascinating life and times of Peggy Guggenheim.

In 1938, aged 39, Peggy Guggenheim opened Guggenheim Jeune, an art gallery in London, beginning a career that would significantly influence the course of art in the second half of the 20th-century. Encouraged by her friend, Irish novelist Samuel Beckett (1906-1989), Guggenheim dedicated herself to contemporary art as if it was "a living thing," while Marcel Duchamp (1897-1968) introduced her to other artists and taught her, as she put it, "the difference between abstract and Surrealist art."

The gallery's first show presented works by Jean Cocteau (1889-1963), and the second was the first solo exhibition of works by Wassily Kandinsky (1886-1944) in the UK, followed by solo shows given to Yves Tanguy and Rita Kernn-Larsen (1904-1988), among others.

The exhibition at Petersfield Museum and Art Gallery aims to explore the multitude of literary, artistic, and intellectual figures of the period with whom Guggenheim interacted and reveal the fascinating untold story of her life in the town and neighbouring West Sussex through her family, friends, and lovers.

*"I loved Europe more than America, and when the war ended, I couldn't wait to go back. ... On my way there, I decided Venice would be my future home. I had always loved it more than any place on earth and felt I would be happy alone there."*

Peggy Guggenheim expert her autobiography "Out of this Century: Confessions of an Art Addict"

From June 2024, some of the treasures held in the Peggy Guggenheim Collection are travelling to Britain, representing a rare opportunity to see them outside of 'La Serenissima', as Louise Weller, Head of Collections and Exhibitions at Petersfield Museum and Art Gallery explains: "This will not be a standard art exhibition, as it is a unique opportunity to use the multi-disciplinary character of Petersfield Museum and Art Gallery; combining artwork, photography, fashion and literature, to tell an often overlooked part of Peggy Guggenheim's extraordinary life."

*Peggy Guggenheim: Petersfield to Palazzo* includes loans from the Peggy Guggenheim Collection, Venice – whose Director, Karole P. B. Vail, is Peggy Guggenheim's elder granddaughter.

*"It will be wonderful to have an exhibition exploring an unexpected and wonderful little-known chapter in Peggy Guggenheim's eventful life before she began her life as a committed patron of the arts."*

Karole P.B. Vail, Peggy Guggenheim Collection, Venice

*Peggy Guggenheim: Petersfield to Palazzo* is supported using public funding by the National Lottery through Arts Council England with additional support from the Henry Moore Foundation.



Supported using public funding by  
**ARTS COUNCIL  
ENGLAND**



**TICKETS ON SALE NOW**  
**WWW.PETERSFIELDMUSEUM.CO.UK**

Peggy Guggenheim on the terrace of Palazzo Venier dei Leoni, Venice, early 1950s  
© Solomon R. Guggenheim Foundation, Venice, Photo Archivio Cameraphoto Epoche, Gift, Cassa di Risparmio di Venezia, 2005





## COLLECTION DISPLAYS

Discover our Collections at Petersfield Museum and Art Gallery showcased in these displays. Included in the admission price, available to [pre-book online](#) or at our Welcome Desk located in the Shop. Concession tickets are available.



### Exploring Pattern: An Artist's Response from the Fashion and Textiles Collection

Standfield Gallery | Open until 1 June 2024

Ebru Kocak is one of only a few artists working in the traditional art form of marbling. In 2023, Kocak was the Artist in Residence at Petersfield Museum and Art Gallery. Inspired by the floral patterns, distinctive shapes, and woven fabrics in the Fashion and Textiles Collection, Kocak created a new artwork titled *Now (2023)*, marbling onto silk and viscose fabrics.

This artwork is displayed alongside the items that inspired the work, including an 18th-century dress made from Spitalfields silk.

*"The past shapes our future and enables us to create something new and unique in the present."*

(Ebru Kocak)

Book admission tickets: [www.petersfieldmuseum.co.uk](http://www.petersfieldmuseum.co.uk)



### Life Through a Lens From the Photography Collection

Petersfield Gallery

Open until 1 June 2024

The Photography Collection contains over 10,000 photographs and picture postcards from the late 1800s to the present day. Ranging from personal family photographs to documentary images, they offer a fascinating record of social and architectural changes over the past decades and a glimpse of people's everyday lives.

This collection display delves into the Photography Collection to share images of some of the artists and art societies that have flourished in the Petersfield area.

## ARTIST-LED WORKSHOPS

Enjoy artist-led workshops inspired by our exhibition programme. Learn a new skill, develop your artistic practice, and enjoy working in a small group within a setting that encourages creativity. All abilities are welcome, 14+, and the price includes all materials.



© Dan Fontanelli

### Colour Blending Tapestry Weaving Workshop with Caron Penney

27 April 2024 | 10.00am-4.00pm  
Tickets: Standard £75 | Museum Friend £65 | Museum Supporter £60 | Includes admission, and introduction to the exhibition and all materials.

In this tapestry weaving workshop for complete beginners to intermediate weavers, participant can explore the wonders of colour and blending. These beautiful weaving techniques allow you to create the most subtle of transitions of colour from dark to light or red to orange without any obvious line or shape. The blending technique can be used with other techniques like hatching threads together to create even more variations.

Participants will work on pre-warped frames, demonstrations will be given, all materials and equipment will be provided.

Book Workshop tickets: [www.petersfieldmuseum.co.uk](http://www.petersfieldmuseum.co.uk)

### Geometric Shapes and Lettering Tapestry Weaving Workshop with Caron Penney

8 May 2024 | 10.30am-4.00pm  
Tickets: Standard £120 | Museum Friend £110 | Museum Supporter £100  
Includes admission, and introduction to the exhibition and all materials.

In this tapestry weaving workshop for complete beginners to intermediate weavers, participants can explore geometric shapes building and geometric lettering. The techniques included are weaving squares, diagonals and letters and creating slits. Additionally, the participants will learn how to sew up a slit and understand the building blocks of how tapestry is made. This course will be fun, informative and an enjoyable learning experience.

Participants will work on pre-warped frames, demonstrations will be given, all materials and equipment will be provided by the tutor.

## TALKS

Enjoy an informal and wide-ranging conversation with artists about their work. Take the opportunity to ask about their inspiration, techniques and their current exhibition.



### Meet the Artists: Katharine Swailes and Caron Penney

30 March 2024 | 1.30pm – 2.30pm  
Included in admission price

Join us for this special event with artists Katharine Swailes and Caron Penney as they share their experiences using the ancient technique of handwoven tapestry and their inspiration from life in the Arun Valley of West Sussex. This is an informal talk that will take place in the exhibition gallery with the opportunity to view the exhibition with the artist.



## FAMILY EVENTS



THE KALA CHETHENA KATHAKALI COMPANY

### Kathakali Drama and Mask-Making Workshop

12 April 2024 | 10.30am–2.30pm  
Child £12 | Accompanying Adult Free

Step into the captivating universe of Kathakali, a 500-year-old dance drama that originated in the Hindu temples of Kerala. Led by The Kala Chethena Kathakali Company, the leading Kathakali group outside of India, this workshop offers an educational look at this cultural tradition and an engaging creative mask making workshop.

Great for ages 7+ years old!

Book Family Event tickets: [www.petersfieldmuseum.co.uk](http://www.petersfieldmuseum.co.uk)



### Family Fun Day: Back to the 90s

13 April 2024 | 11.00am–4.00pm  
Normal admission prices  
Under 18s go free!

Join us for a blast from the past as we party like it's 1999 with our Back to the 90s Family Fun Day! We're rewinding and dialing up the nostalgia with the hits from the 90s disco, throwback activities that will make you feel like a kid again, and crafts for the whole family to enjoy together.

Great for ages 5-12 years old!



### Creative Saturday Family Workshops

Join our fun, hands-on workshops led by an experienced artist educator, Jo, from The Craft Zen. Spend time together as you develop your creative talents. Each session is inspired by one of our current exhibitions. Children must be accompanied by an adult. Suitable for all abilities.

*"What a lovely way to spend a morning with our children. We all enjoyed learning new skills."*

*Participant,  
Creative Saturday*

## FAMILY EVENTS



### Stamp and Print

30 March 2024 | 10.30am-12.00pm  
Tickets: £8 per person (Includes admission and all materials)

Explore using letters and images to create your own handmade Easter cards.

Inspired by our Object in Focus.

Book Family Event tickets: [www.petersfieldmuseum.co.uk](http://www.petersfieldmuseum.co.uk)



### Wild Weaving

27 April 2024 | 10.30am–12.00pm  
Tickets: £8 per person (Includes admission and all materials)

Create your own weaving artwork inspired by nature.

Inspired by Katharine Swailes and Caron Penney: The Language of Weaving.



### Concertina Sketchbook

May 25 2024 | 10.30am–12.00pm  
Tickets: £8 per person (Includes admission and all materials)  
Under 18s go free!

Make your own concertina sketchbook and fill it with collage and drawings.

Inspired by the Flora Twort Art Collection.



## EARLY YEARS

We provide a range of interactive, creative learning sessions for children under 5 and their families. Our programme is designed alongside a child development expert and a teacher, with sessions aimed at improving children's well-being and promoting the development of key skills.



### Museum Mischief Makers

Most Mondays, except bank holidays | 10.00am–11.00am  
Check our website for upcoming dates and session themes.

Free to attend, but booking in advance is required.

Join us with your little ones for a unique opportunity to explore the Museum and Art Gallery in an interactive, sensory and sometimes messy way! Activities encourage complete freedom of expression. No rules - just fun!



### Toddler Takeover X: Back to the 90s

15 April 2024 | 11.00am–4.00pm  
Normal admission prices |  
Children Under 5: Free

Join us for a blast from the past as we party like it's 1999 with our Back to the 90s Toddler Takeover! We're taking off 'to infinity and beyond!' with nostalgic hits from the 90s disco, throwback activities that will make you feel like a kid again, and crafts for the whole family to enjoy together.

*We visit every week, and the sessions are always brilliant – the kids love it!*

*Parent Participant,  
Museum Mischief Makers*

Book Early Years tickets: [www.petersfieldmuseum.co.uk](http://www.petersfieldmuseum.co.uk)

## COFFEE SHOP EVENTS

Savour the moment at our Coffee Shop, an intimate venue where coffee meets culture. Come meet the barista team and enjoy a coffee-inspired event!



### Retro Games Day

20 April, 11 May 2024 | 10.00am-3.00pm  
Free drop in event

Dive into nostalgia with our Coffee and Retro Games Days! Grab yourself a coffee and cake and transport yourself back in time as you take the opportunity to play one of our retro games consoles.

Every event showcases a different console and game, from Super Mario Kart on the SNES to Space Invaders on an Atari, Crash Bandicoot on the PlayStation 1 to Super Mario on the game cube, there is something from everyone's childhood!

Book Coffee Shop Event tickets: [www.petersfieldmuseum.co.uk](http://www.petersfieldmuseum.co.uk)

### Ask the Barista: Coffee Consultation

30 March, 27 April, 29 May 2024 | 11.00am-12.00pm Free drop in sessions

Unlock the secrets of exceptional coffee with our award-winning barista! Ready to elevate your coffee experience? Join us at the Coffee Shop for our free drop in sessions. Get those coffee questions answered by a knowledgeable and friendly barista. See you there!





## LIVE MUSIC

Tickets are available to purchase from our [What's On webpage](#), at the Welcome Desk, or on the door (subject to availability). To avoid disappointment, we recommend booking in advance. Our fully licensed bar is open throughout each live music event, located in the Coffee Shop.



### Krista Green

20 April 2024 | 8.00pm–10.00pm (Doors Open: 7.30pm)  
Standard: £12 | Museum Friend: £10 |  
Museum Supporter: £10

A winner of 'BMTH Unplugged 2011,' Krista Green has released three successful albums to date. Her original material takes you on an authentic and unapologetically honest lyrical journey. From soul-stirring ballads that can bring a tear to even the driest of eyes to upbeat, feel-good pop/rock that will have you up and dancing, Krista's performance promises a diverse and unforgettable musical experience.

As a multi-instrumentalist and vocalist, Krista has been songwriting for over twenty years and is currently working on her highly anticipated fourth album.

Book Live Music tickets: [www.petersfieldmuseum.co.uk](http://www.petersfieldmuseum.co.uk)

## LIVE MUSIC



### Emilie Lierre

17 May 2024 | 8.00pm–10.00pm (Doors Open: 7.30pm)  
Standard: £12 | Museum Friend: £10 | Museum Supporter: £10

Born in Manchester and raised in Portsmouth, Emilie's heart was always set on exploration. It was a broken relationship that led her to the vast landscapes of Australia. Here, she turned her pain into art, busking on the streets and sharing her soulful tunes with the world. This chapter of her life wasn't just an escape but a transformative period. She received accolades and recognition with appearances on ABC and Triple R radio in Melbourne, bolstering her confidence and cementing her ambition to record an album.

The result? "The Wanderer". Emilie's debut album is more than just a collection of songs; it's a musical odyssey. As a natural nomad, Emilie's experiences from Manchester to Portsmouth, and across the southern hemisphere, have infused her music with profound reflections on life, love, and the ever-evolving world.

*"When Emilie Lierre released her debut single "Extraordinary", it created a buzz due to its simple but alluring sound and outstanding vocals."*

Indie Band Guru

Book Live Music tickets: [www.petersfieldmuseum.co.uk](http://www.petersfieldmuseum.co.uk)



## THEATRE

Join us for a one-of-a-kind backdrop for theatre productions hosted in our historic courthouse or outdoor courtyard. Perfect for an intimate performance, get there early to grab the best seat in the house! Remember, our Coffee Shop is open throughout the show as a fully licensed bar. Our wide range of beverages ensures there's something for everyone!



### Scotland Yard Investigates

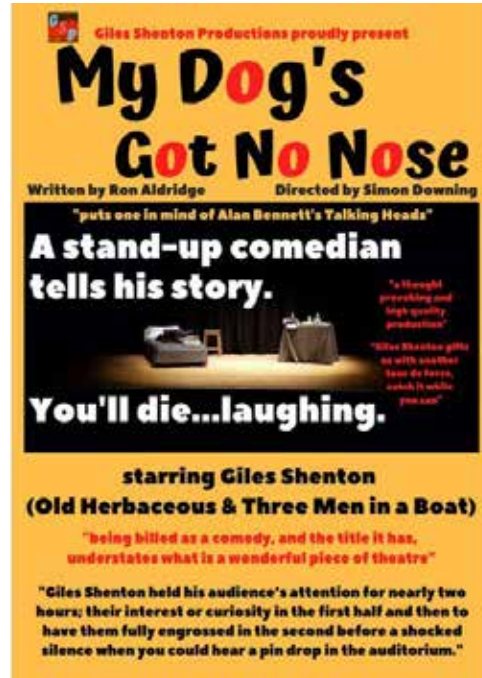
Presented by Don't Go Into The Cellar Theatre

23 March 2024 | Matinee: 4.30pm (Doors Open: 4.00pm),  
Evening: 7.30pm (Doors Open: 7.00pm)

Adult: £15 | Museum Friend: £14 | Museum Supporter: £13 | Young Person: £10

From the files of Scotland Yard come these startling stage adaptations of infamous true-life nineteenth century crimes. Faithful to the source material but employing a theatrical flourish, expect to be entertained and horrified in equal measure. Featuring dramatizations of the Thames Torso Murders, the Whitechapel Murderer and the Lambeth Poisoner, Dr Thomas Neill Cream!

Book Theatre tickets: [www.petersfieldmuseum.co.uk](http://www.petersfieldmuseum.co.uk)



### My Dog's Got No Nose

Presented by Giles Shenton Productions

18 April 2024 | 7.30pm-9:30pm  
(Doors Open: 7.00pm)

Adult: £15 | Museum Friend: £14  
| Museum Supporter: £13

Join Giles Shenton (Old Herbaceous, Three Men in a Boat) as he plays a man preparing backstage for his first ever stand-up comedy gig. Something he has waited over 30 years for. Find out how he got to this point in his life.....but be warned.....the man and the performance are not quite what they seem!

*"Giles Shenton gifts us with another tour de force...catch it while you can!"*  
Surrey Advertiser

## THEATRE

### The Vegan Tigress

Presented by LynchPin Theatre

23 May 2024 | 7.30pm-9:30pm

(Doors Open: 7.00pm)

Adult: £15 | Museum Friend: £14

| Museum Supporter: £13

A 19th century feminist fairy tale writer accidentally summons the highly offended ghost of her spurned lover's formidable mother. The opposing worlds of free spirits and corsets collide in a chaotic bid to understand where stories can escape to when they've run their course.



### Clarice Cliff: Sunshine on a Plate

Presented by Phoenix Art

8 June 2024 | 7.30pm-9:30pm (Doors Open: 7.00pm)

Adult: £15

Clarice Cliff was an extraordinary woman. Her striking, colourful and innovative designs have made her a household name and in May 2003 one of her most famous pieces was sold at Christie's for almost £40,000. Her vibrant and joyful designs represented the new modern spirit of the 1930's for women and the play charts her rise from humble working-class beginnings to art director of a famous commercial firm. She was publicly celebrated throughout the pottery trade, but her private life concealed a heart wrenching secret which could have ruined her.



## COMMUNITY ENGAGEMENT



© Petersfield Museum and Art Gallery

### Museum Elevenses

11.00am–12.30pm

Free, drop-in monthly sessions (Admission not included)

Themes:

3 April and 6 April: Pubs

1 May and 4 May: Fetes

Join us for a nostalgic look back in time as we explore images from The Don Eades Collection over a cup of tea or coffee. Don Eades was a press photographer whose work captured the life of local residents from the 1960s to the 1980s. There will be printouts of the images shown on the screen for you to annotate with names and memories.

*“Very interesting – brings back memories!”*

Museum and Art Gallery Visitor

### Relaxed Openings

6 April and 4 May, 2024 |

9.00am–10.30am

Normal admission prices |

Booking in advance is

recommended.

Explore our collections and galleries without any noisy interactives or videos. Our friendly team members will be available to give you a warm welcome and support your visit. At 10.30am, we open the doors to general admission and return to regular operation. But you are welcome to stay in the Museum and Art Gallery for as long as you like.

*“I have never been anywhere as accommodating as here. Nothing was too much trouble – asking for signs in Makaton and giving us a sensory backpack full of goodies to borrow. I wish other places were like this!”*

Museum and Art Gallery Visitor



## CELEBRATING 25 YEARS

Join us for a spectacular evening of celebration and fundraising for the future at the 25th Anniversary Gala. We are thrilled to mark 25 years of Petersfield Museum and Art Gallery's history, community, and outlook to the future.

Petersfield  
MUSEUM  
and ART GALLERY  
CELEBRATING 25 YEARS

### 25th Anniversary Gala

17 October | 7:00pm - 11:30pm | The Tithe Barn, Ditcham

Ticket available from April 2024 | Standard: £58 | Table of 8: £450

Celebrate 25 years of Petersfield Museum and Art Gallery at this special night to reminisce and look to the future. Don't miss out on this memorable night of festivities, entertainment and fundraising including:

- Delicious 3-Course meal by renowned caterers *Tourelle Cuisine*
- Live Music by *The Fabulous Fug Band*
- Auction hosted by Jonathan Pratt
- Raffle and Prize Draw
- Auction and Silent Auction

Join us for a night of elegance and celebration at the 25th Anniversary Gala. This special event aims to raise funds for the future of Petersfield Museum and Art Gallery's exhibitions, collections, events and programmes.

For ticket information, please contact us at  
[www.petersfieldmuseum.co.uk/contact-us](http://www.petersfieldmuseum.co.uk/contact-us)



## MEMBERSHIP

Join us today and enjoy access to an incredible range of benefits. As an independent museum and art gallery, we do not receive regular funding. Your generous support therefore helps us to maintain our collections for future generations.

### Became a **Friend** of Petersfield Museum and Art Gallery

- Individual - £25 a year
- Student - £15 a year

#### Benefits

- Unlimited entry to the Museum and Art Gallery for the duration of your Friend membership
- Invitation to an exclusive Friend and Supporter event
- Discounts on selected Museum and Art Gallery events (*subject to availability and must be booked in advance*)
- 10% discount in the Shop at Petersfield Museum and Art Gallery (*exceptions apply*)
- 15% discount in the Coffee Shop at Petersfield Museum and Art Gallery (*exceptions apply*)
- Regular emails about events and exhibitions

### Become a **Supporter** of Petersfield Museum and Art Gallery

- Individual - £50 a year
- Individual and a Guest - £75 a year\*

#### Benefits

- Unlimited entry to the Museum and Art Gallery for the duration of your Supporter membership
- Invitation to an exclusive Friend and Supporter event
- Discounts on selected Museum and Art Gallery events (*subject to availability and must be booked in advance*)
- 10% discount in the Shop at Petersfield Museum and Art Gallery (*exceptions apply*)
- 15% discount in the Coffee Shop at Petersfield Museum and Art Gallery (*exceptions apply*)
- Free book loans from The Edward Thomas Study Centre at Petersfield Museum and Art Gallery
- Free participation in Museum walks and talks (*subject to availability and must be booked in advance*)
- Monthly treat in the Coffee Shop at Petersfield Museum and Art Gallery
- Invitation to special events
- Regular emails about events and exhibitions

*\*To access the benefits, your guest must accompany you to the Museum and Art Gallery.*

To become a Friend or Supporter, please visit the Welcome Desk or buy online at [www.petersfieldmuseum.co.uk](http://www.petersfieldmuseum.co.uk)

## VENUE HIRE

Discover the versatile event spaces at Petersfield Museum and Art Gallery, where we offer a range of rooms for rental purposes.

Whether you're in search of a venue for a performance, business meeting, or celebratory gathering, our facilities are at your service. Our catering options are also at your disposal to ensure your guests are delighted with their visit.

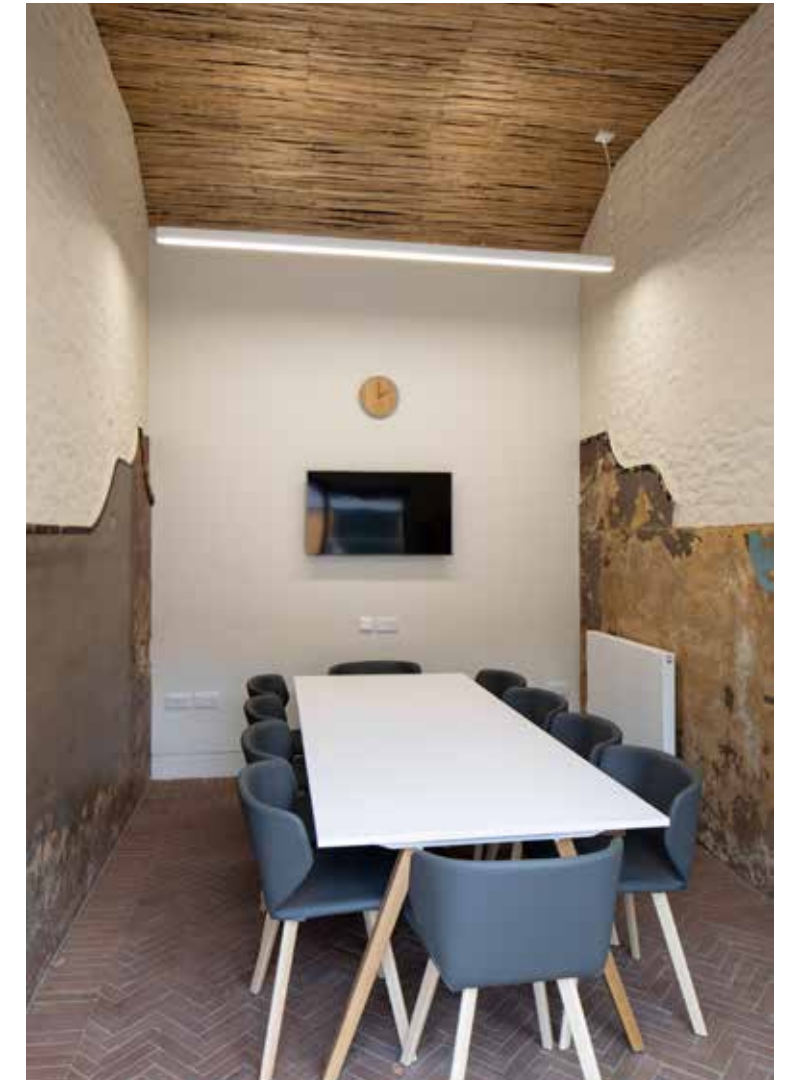
For further information, please contact [hospitality@petersfieldmuseum.co.uk](mailto:hospitality@petersfieldmuseum.co.uk) or call 01730 262601



The Courtyard. Picture by Richard Chivers



The Courtroom. Picture by Richard Chivers



The Meeting Room. Picture by Richard Chivers

Discover more: [www.petersfieldmuseum.co.uk](http://www.petersfieldmuseum.co.uk)



## PLAN YOUR VISIT

### Opening Times

Open Tuesday to Saturday, 10.00am–5.00pm (Last entry at 4.00pm).

### June Closure

In preparation for our site-wide exhibition, *Peggy Guggenheim: Petersfield to Palazzo*, our galleries will be closed from 3 June - 14 June 2024.

The Coffee Shop, Shop and the Edward Thomas Study Centre will remain open (normal hours) during the closure period, apart from Saturday 8 June, when we will be completely closed during the day – opening before the performance of *Clarice Cliff: Sunshine on a Plate* in the evening.

The Museum and Art Gallery will fully re-open on Saturday 15 June 2024, featuring the new exhibition *Peggy Guggenheim: Petersfield to Palazzo*.

### Tickets

Purchase admission and event tickets online at [www.petersfieldmuseum.co.uk](http://www.petersfieldmuseum.co.uk) or at the Welcome Desk in the Museum Shop.

All events have individual prices. Please check the [What's On](#) section of our website for more details.

### Admission Prices

Adults: **£8.00**

Age 60+ / Unwaged / Disability / Military / NHS: **£7.00**  
(Proof of discount may be required)

Under 5s: **Free**

Child (aged 5-11): **Free**

Young Person (aged 12-17): **Free**

Students: **£5.00** (Proof of discount may be required)

Carer / Companion: **Free**

The Art Fund: **£4.00**

Museum Association: **Free**

### Getting Here

Petersfield Museum and Art Gallery is housed in the old Police Station and Courthouse on St Peter's Road in the centre of Petersfield

### Address

Petersfield Museum and Art Gallery, St Peter's Road, Petersfield, Hampshire, GU32 3HX

### By Car

Petersfield is easily accessible via the A3 or the A272. Parking is available at the nearby pay and display car parks by Tesco or Waitrose supermarkets.

### By Rail

Petersfield is easily accessible by rail, and the Museum and Art Gallery is only a 10-minute walk from Petersfield Station. Follow Lavant Street (opposite the station) exit to the end, and then turn right onto Chapel Street. This takes you out onto The Square. St Peter's Road is in the opposite corner of The Square, between Café Nero and St Peter's Church.

### By Bicycle

Petersfield is a great starting point for exploring the South Downs by bicycle. We have a range of South Downs and trail leaflets in the Shop to help you start your adventure!

### Accessibility

We want everyone who visits Petersfield Museum and Art Gallery to enjoy the building, collection and exhibitions. If you require any further information, please call 01730 262601.

### Wheelchair & Buggy Access

The Museum and Art Gallery site is fully accessible for wheelchair users and buggies, but at a certain point during your visit you will have to double back to avoid some stairs located at the end of the Petersfield Gallery. A member of staff will provide further guidance on your arrival.

A wheelchair is available free of charge from the Welcome Desk.

Wheelchairs/Buggies can be left near the Welcome Desk during your visit but are left at the owner's own risk.

### Hidden Disabilities

We welcome and support visitors who choose to wear a Sunflower item as part of the Hidden Disabilities Sunflower scheme. We have some Sunflower items available at the Welcome Desk if you would like to pick up something.

### Service Dogs

All service dogs are welcome throughout Petersfield Museum and Art Gallery.

### Accessible Toilet

There is an accessible toilet by the Welcome Desk near the main entrance, and also in the Courthouse.

### Baby-Changing Facilities

Baby-changing facilities are available in the accessible toilet in the Shop, and also in the Courthouse.

### Accessible Parking

There is one accessible parking space at the front of the Museum and Art Gallery which is available for visitors with mobility issues. Unfortunately, this space cannot be booked in advance.

### Seating

There are benches located around the Museum and Art Gallery where you can sit and contemplate, with further seating available in the Courtyard.

### Accessible Resources and Displays

A fixed hearing loop is available at the Welcome Desk.

Large-print labels are available in each of the galleries and temporary exhibitions.

### SEND Resources

We offer several resources for visitors with SEND (Special Educational Needs and Disabilities). To access these, please visit:

[www.petersfieldmuseum.co.uk/visit/accessibility](http://www.petersfieldmuseum.co.uk/visit/accessibility)

### Contact Us

[visitorexperience@petersfieldmuseum.co.uk](mailto:visitorexperience@petersfieldmuseum.co.uk)

Telephone: 01730 262601

Facebook: [@petersfieldmuseum](#)

Instagram: [@petersfieldmuseum](#)

X: [@PfieldMuseum](#)





Petersfield  
**MUSEUM**   
 and **ART GALLERY**

Design: PAUL MARTIN STUDIO

Project support from Arts Council England

